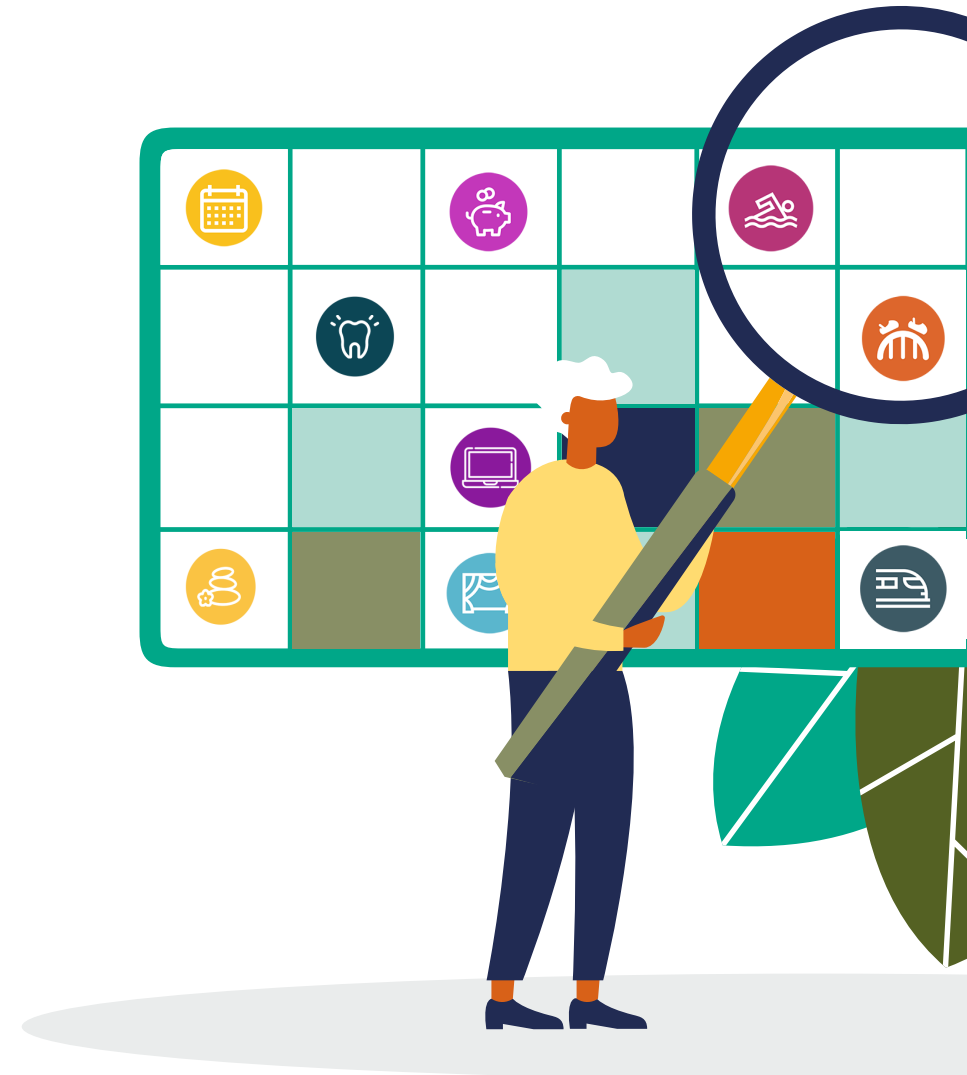


Benefits of Working in Children's Social Care

You are at the heart of everything we do!

Bracknell Forest Council understands that a motivated workforce is the most important factor for it to be successful. It is vital that our employees feel rewarded for their contribution and we'll make sure that you have access to all the training, coaching and development you need to achieve your goals - as you help us achieve ours.

By combining quality training in a supportive local authority with financial incentives, well-being initiatives and flexible benefits, we are sure you will find working in Bracknell Forest the right career choice for you!





Teams	Zoned staff teams	Vivup Employee Assistance Programme	Confidential telephone counselling service available 24 hours a day, 7 days a week
Shopping Vouchers	5% off at Sainsbury's	Kaarp Benefits	Money off a range of leisure and entertainment purchases
Leisure Centre Membership	Staff discount on leisure membership	Sports and Social Clubs	A wide variety of events planned each year
Health Screening	A choice of available tests at a small cost to employees, administered by a professional screening provider	Dental Plans	Immediate dental cover arranged by Denplan, The UK's leading dental payment plan specialist

For a full list of staff benefits please visit: <https://www.bracknell-forest.gov.uk/jobs/why-work-bracknell-forest-council/staff-benefits>



Contacts:

For more information on the benefits of working for Bracknell Forest Children's Social Care visit our micro-site <https://www.bracknell-forest.gov.uk/jobs/childrens-social-care-jobs>

Email: Recruitment@bracknell-forest.gov.uk

